



 COMPLETE-COMS
www.complete-coms.com

OUTDOOR EQUIPMENT CABINETS



OUTDOOR EQUIPMENT CABINET OVERVIEW

Our cabinets are trusted to protect mission critical equipment in the toughest environments; remote sites in the tropics, desert and outback stations in Australia and the Middle East and highly exposed alpine locations above the snowline.

Complete-Coms enclosures offer a cost effective, low impact option for a variety of applications.

Our basic offering is a single bay cabinet in 10RU, 20RU and 42RU sizes. We hold stock of these models with basic cooling options suited to conditions in New Zealand.

Options for 5083 marine grade aluminium or marine grade 316 stainless steel construction material.

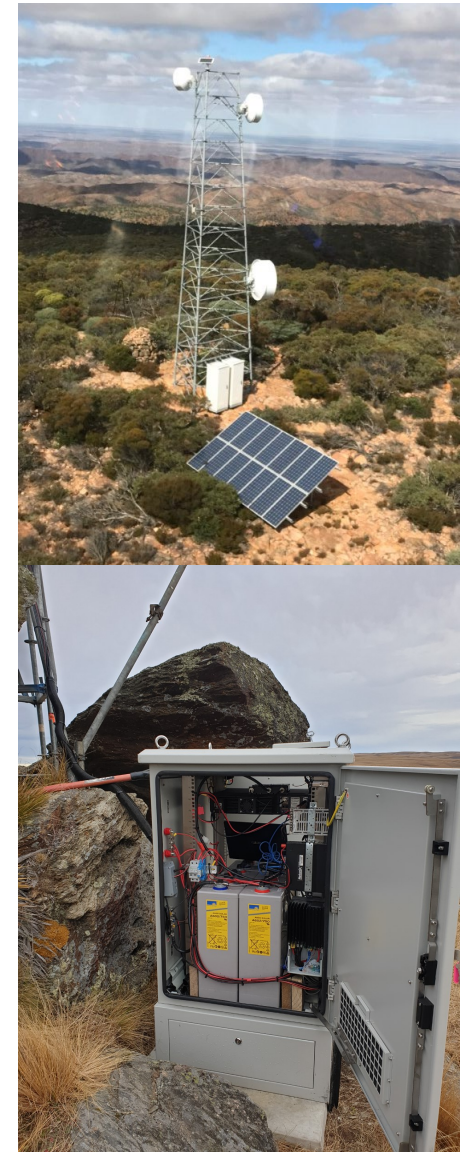
Complete-Coms has an extensive catalogue of existing designs and we work with you to ensure the correct material, cooling option and cabinet size are applied. We can also design a customised solution for your requirement.

All cabinets are supplied with as-built diagrams and come with a declaration of conformity to local regulatory requirements.



WHY COMPLETE-COMS CABINETS?

- © We continuously work to improve our product and the partners we work with to ensure our cabinets and the associated inclusions provide the best composition of cost and performance
- © Complete-Coms has an extensive catalogue of existing designs and we work with you to ensure the correct material, cooling option and cabinet size are applied
- © We offer free cooling calculations and cabinet drawings and supply a copy of the cooling design and cabinet drawings with every cabinet order
- © All cabinets include power distribution and come with a declaration of conformity for local electrical regulatory requirements
- © All cabinet air conditioners and heat exchangers include Ethernet monitoring and control. We only supply cooling options that have been proven reliable in the toughest environments and require minimal ongoing maintenance
- © Standard Warranty is 36 months for Aluminium and 316SS cabinets.



OUTDOOR EQUIPMENT CABINET DETAILS

- 1 Material and colour:** Available in marine grade 316SS or 5083 ALU and powder coated with standard RAL colours.
- 2 Cooling Option:** Options for AC and DC powered air conditioners, heat exchangers, low consumption thermo-electric cooling, fan cooling or passively cooled cabinets.
- 3 Lock, door and Hinges:** Integral anti-tamper hinges and security lock. Options for door location. By default single door at front of cabinet.
- 4 Distribution and Grounding:** 3RU power distribution panel pre-wired with AC and DC distribution. For AC systems includes AC surge protection and RCD plus circuit breakers and GPOs. Ground bars included.
- 5 19" Racks and Shelving:** Includes 19" racks with options for battery and equipment shelving. 19" are braced every 20RU by default to support heavier equipment.
- 6 Filters:** On cabinets with no air conditioning or heat exchanger filters are provided. These can be easily accessed for maintenance and cleaning. Options for exhaust fans.
- 7 Cabinet Skin:** 10RU cabinets are typically single skin. All larger cabinets are dual skin with PU insulation.
- 8 Mounting:** 10RU cabinets are typically wall or pole mounted with larger sizes being base mounted. All mounting hardware is provided with the cabinet and there are options for lockable bases on the larger cabinets.

